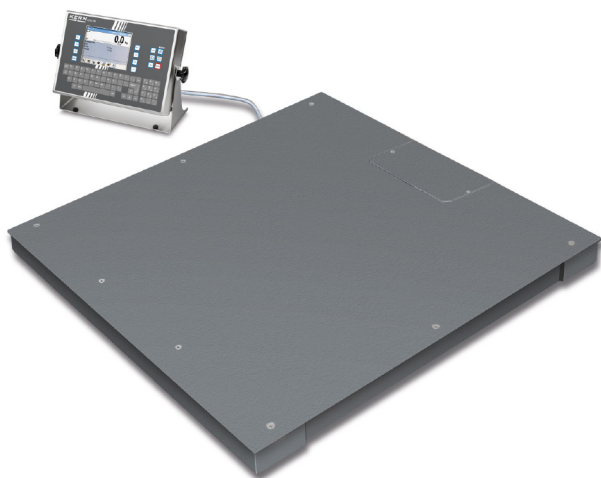


# KERN BBB3T-3M



Wägebrücke mit verschraubter Wägeplatte (IP68) und Touchscreen-Auswertegerät (IP66)  
mit umfangreichen Industriefunktionen



## Measuring system

Adjustment options:	External calibration
Linearity:	2 kg
Readout [d]:	1 kg
Recommended adjusting weight:	3000 kg (M2)
Reproducibility:	1 kg
Resolution:	3000
Stabilisation time:	2 s
Tare range:	-500000000 mg
Warm up time:	10 min
Weighing range [Max]:	3 t
Weighing system:	Strain gauge
Weighing units:	kg

## Display

Display digit height:	2,100 cm
Display digit height:	1,900 cm

## Technical data about verification

Minimum load [Min]:	20 kg
Periodic Verification Italy:	969-112
Verification approval conforming to 90/384/EEC:	yes
Verification by KERN possible:	yes
Verification class:	III
Verification value [e]:	1 kg

## Functions

Capacity display:	yes
Conversion function:	yes
Counting function:	yes
Data hold function:	yes
Density determination function:	yes
Dispensing function:	yes
Function to save totals:	yes
Help function on the display:	yes
Peak function:	yes
Percentage determination:	yes
PRE-TARE function:	yes
SLEEP function:	yes
Standby function:	yes
Statistical function:	yes
Time display:	yes
Vibration-free weighing (Animal weighing program):	yes
Weighing with tolerance range:	yes

## Environmental conditions

Maximum humidity:	80 %
Maximum operating temperature:	40 °C
Minimum ambient temperature:	-10 °C
Minimum humidity:	0 %

## Power supply

Input voltage:	100 V - 240 V
----------------	---------------

## Service

DAkkS Certificate:	963-132
Verification:	965-232

## Category

Category:	Balances
Product Group:	Floor scale

## Packaging & shipping

Delivery:	120 h
Dimensions packaging (WxDxH):	1300 x 1550 x 350 mm
Gross weight:	164 kg
Net weight:	135 kg
Shipping method:	Freight forwarder

## Construction

Cable length of display device:	5 m
Dimensions housing (WÄDÄH):	250 x 160 x 58 mm
Dimensions of display device (WÄDÄH):	282 x 200 x 76 mm

# KERN BBB3T-3M



Wägebrücke mit verschraubter Wägeplatte (IP68) und Touchscreen-Auswertegerät (IP66)  
mit umfangreichen Industriefunktionen

Dimensions of weighing plate (WxDxH):	1500 x 1250 x 80 mm
Level indicator:	yes
Material weighing plate:	Metal lacquered
Revolving screw feet:	yes
Weighing surface (WxD):	1500 x 1250 mm