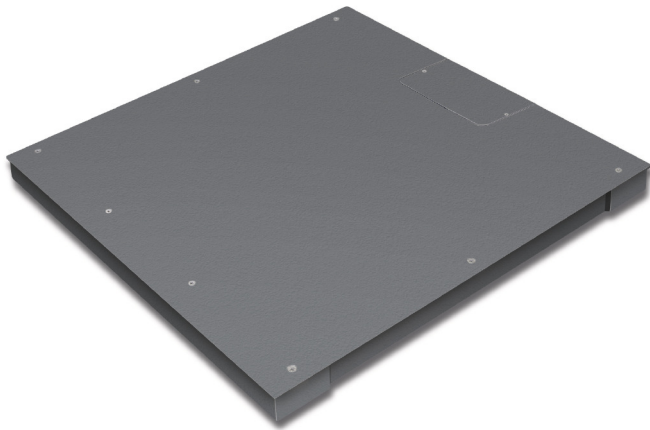


KERN KXP 1500V20M

Wägebrücke aus rutschfestem Stahl-Riffelblech, lackiert mit IP67



Material weighing plate:	Steel lacquered
Revolving screw feet:	yes
Weighing surface (WxD):	1500 x 1250 mm

Measuring system

Readout [d]:	500 g
Resolution (non verifiable):	3000
Weighing range [Max]:	1,500 t

Technical data about verification

Minimum load [Min]:	10 kg
Periodic Verification Italy:	969-112
Verification by KERN possible:	yes
Verification class:	III
Verification value [e]:	500 g

Environmental conditions

Maximum operating temperature:	40 °C
Minimum ambient temperature:	-10 °C

Service

DAkkS Certificate:	963-130
Verification:	965-230

Category

Category:	Platforms
Product Group:	Weighing bridge

Packaging & shipping

Delivery:	48 h
Dimensions packaging (WxDxH):	1530 x 1300 x 335 mm
Gross weight:	174 kg
Net weight:	145 kg
Shipping method:	Freight forwarder

Construction

Cable length:	5 m
Dimensions of weighing plate (WxDxH):	1500 x 1250 x 80 mm