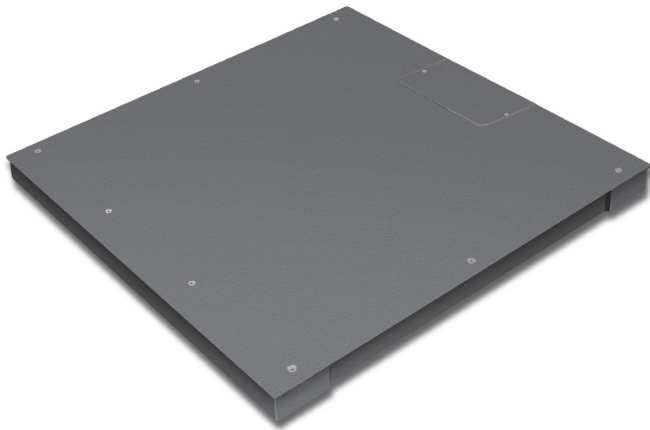


KERN KXP600V20SM

Wägebrücke aus rutschfestem Stahl-Riffelblech, lackiert mit IP67



Material weighing plate:	Steel lacquered
Revolving screw feet:	yes
Weighing surface (WxD):	1000 x 1000 mm

Measuring system

Readout [d]:	200 g
Resolution (non verifiable):	3000
Weighing range [Max]:	600 kg

Technical data about verification

Minimum load [Min]:	4 kg
Periodic Verification Italy:	969-112
Verification by KERN possible:	yes
Verification class:	III
Verification value [e]:	200 g

Environmental conditions

Maximum operating temperature:	40 °C
Minimum ambient temperature:	-10 °C

Service

DAkkS Certificate:	963-130
Verification:	965-230

Category

Category:	Platforms
Product Group:	Weighing bridge

Packaging & shipping

Delivery:	48 h
Dimensions packaging (WxDxH):	1020 x 1020 x 340 mm
Gross weight:	118 kg
Net weight:	96 kg
Shipping method:	Freight forwarder

Construction

Cable length:	5 m
Dimensions of weighing plate (WxDxH):	1000 x 1000 x 80 mm